

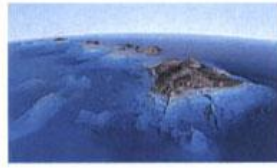


kauluhoi.org

E KIPA MAI A E
HELUHELU I NĀ
MO'OLELO PIHA O
KĒIA NŪPEPA.



NA WAI KA 'OLE O
KE AKAMA'I?
NA LEILANI CHOW



UA MAU KE EA O
KE AUPUNI
NA KEAWE GOODHUE

E HO'OUNA MAI!!
I LEKA, MO'OLELO,
NŪHOU, MELE, NANE,
A ME NĀ 'ANO MEA
LIKE 'OLE E ULU AI KA
HOI. **KA HUA I KA
UMAUMA, HUA'INA!**
leka@kauluhoi.org

KA ULU HOI



Ka Poe Kāmano na B. Kauahi

‘O ka manawa ia a nā i‘a kāmano e holo ai mai ke kai mai. Ho‘i akula nā kauhulu o ka i‘a kāmano i ke kahawai o lākou i hānau ‘ia ai. E holo ana ke kāmano i ke au nui ma loko o nā mile he nui, ma hope o nā makahiki he nui i ke

kai ‘ē. He mea kupaiānaha nō ia, ‘a‘ole i maopopo le‘a i ka po‘e ‘epekema kēia ho‘i ‘ana o ka po‘e kāmano i ka wai hānau.

Pēlā no ka hana o kēlā mau po‘e ‘ōiwi o ‘Amelika i ho‘i i ke kulāiwi. Ua ho‘i akula ka po‘e Sioux ma muli o ke kūpiliki‘i o ka honua o laila, ‘o ia nō ka ho‘omoe hou ‘ana i ka Dakota Access Pipeline. ‘O ka paipu kēia e lawe i ‘aila

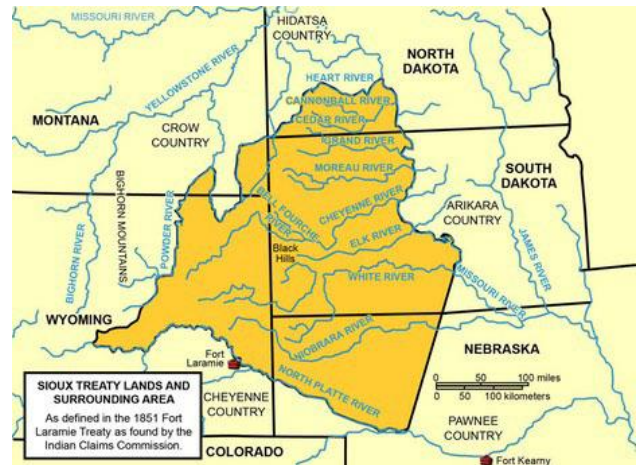
ma lalo o nā kahawai. A he wahi ‘ānihinihi kahi o ka paipu lawe ‘aila, no ka mea, inā nahā ka paipu a hanini ka ‘aila, ‘o ka ho‘opō‘ino akula nō ia i ka wai ola o ka po‘e o lalo i ka hema.

Ke ‘ōlelo ‘ia nei e ka po‘e ho‘omoe paipu, ‘a‘ole e ho‘omoe ‘ia ka paipu ma luna o ka ‘āina a ka po‘e Sioux, e ho‘omoe ‘ia ana i ka ‘ākau o ka ‘āina ho‘opulapula, ‘o ia ho‘i ka reservation ‘o Standing Rock. A ho‘omoana akula ka po‘e Sioux ma kahi ‘o Cannon Ball i mea e kū‘ē ai. ‘A‘ole ia ma loko o ka palena politika i kaha ‘ia e ke Aupuni Federala o ‘Amelika no ka po‘e Sioux. He mea ‘i‘o kēia e ‘ōlelo pinepine ‘ia i kēia mokuāhana. Me he mea lā, i ka mana‘o o ka po‘e ho‘omoe paipu, “Inā pēlā, he aha ia iā ‘oe e ka mea Sioux? He aha kāu? ‘A‘ohe ou kuleana i ‘ane‘i.” ‘A‘ole e maopopo i ka ho‘omoe paipu a me ke Aupuni ‘o ‘Amelika ka ho‘i ‘ana o ka po‘e Sioux ma waho o ka ‘āina ho‘opulapula. Akā, ua like maoli nō ko ka po‘e Sioux holo ‘ana me ka holo ‘ana o ka po‘e kāmāno.



No ka mea, pehea nō lā ho‘i e ‘ike pono ai ke kāmāno i kona wahi hānau pono‘īma hope o nā makahiki he nui i ke kai? Ua ‘ōlelo ‘ia, hiki i ke kāmāno ke ho‘i ma muli o ka ‘ike ‘ana o kona po‘o i ka ‘ume mageneti o kona mau wai hānau. A alaka‘i ia ‘ume mageneti i ke kāmāno mai ke kai ‘ē a i kona wai hānau. ‘A‘ole maopopo ka palena politika o ke kahawai i ke kāmāno, maopopo wale nō iā ia kahi ona e ho‘i ai. ‘O ia pane, he mea āiwaiwa no ka po‘e ‘epekema a me ka po‘e politika o ‘Amelika. Akā na‘e, ‘a‘ole

paha he mea pāha‘oha‘o no kākou, ka po‘e e ‘ike pono i ia mea he aloha ‘āina. No ka mea, pēlā nō ka ‘ike o ka po‘e ‘ōiwi o nā ‘āina like ‘ole. Maopopo iā kākou ka ‘ōlelo a J. Nāwahī, “O ke Aloha Aina, oia ka Ume Mageneti iloko o ka puuwai o ka Lahui, e kaohi ana i ka noho Kuokoa Lanakila ana o kona one hanau ponoī.” He mea iki ka palena politika i ke aloha ‘āina o ka po‘e ‘ōiwi. E alaka‘i ‘ia ana nō lākou i ka ‘āina hānau.



A pēlā ‘i‘o nō, i ka ‘ike ‘ana aku i nā palapala ‘āina o ka wā i hala, ma kahi o nā makahiki 1850 a ma mua aku, he ‘āina kulāiwi nō ho‘i kēia no ka po‘e Sioux. A he kula nō ia o nā iwi, kahi i kanu pa‘a ‘ia ai ko lākou po‘e kūpuna. Pehea nō lā ho‘i e ‘ōlelo ‘ia ai, ‘a‘ohe kuleana o ka po‘e Sioux i laila? Ua ‘ike pono ka po‘e Sioux i ko lākou ‘āina kulāiwi pono‘ī, i loko nō o ka hala ‘ana o nā mile he nui, a me nā makahiki he nui, ma muli o ka ‘Ume Mageneti.



I ka pule aku nei, ua kipaku ‘ia ka po‘e ‘ōiwi ma Cannon Ball. Puhī ‘ia kahi ho‘omoana i ke ahi. Pau nā hale kamala, pau nā hale tīpī, pau ka noho ho‘omoana, pau ka noho ‘oko‘a. ‘A‘ole na‘e i pau ke kū‘oko‘a. ‘A‘ole na‘e i pau ke kū‘ē. He au kanai‘i nō ho‘i ke hiki mai ana, e ka‘i ‘āuna ana nō ia po‘e kāmano i ko lākou wai hānau. A e kū ana ka po‘e kāmano me he kūmano lā.

Na Wai Ho‘i ka ‘Ole o ke Akamai?

na Leilani Chow

Ma ka lā ‘umikūmākolū o Pepeluali o kēia makahiki nei, komo ‘ia ka pālule-T ‘ula‘ula o ke kū‘ē e ‘eono kaukani ā ‘oi kumu, haumāna, a me nā mākuā mai nā kula aupuni o Hawai‘i. Ua hele wāwae lākou mai ka hale hō‘ike ‘o Blaisdell a hiki i ke kapikala o kēia moku‘āina. Naue nō ua po‘e nei no ka ho‘omaopopo le‘a ‘ana i ka ‘aha‘ōlelo kau kāmāwai i ke kākō‘o o lākou ma hope o ka pila e kūkākūka ‘ia nei e ‘imi i kālā hou aku no nā kumu a me nā kula aupuni. Ua ne‘epapa ke koko o kēia ‘āina no ka ho‘ololi ‘ana i ke kuana‘ike waiwai o Hawai‘i i kēia au.

I kēia wā, ‘ōlelo ‘ia e ka moku‘āina ‘a‘ole lawa ke kālā no ka uku pono i nā kumu, a i ‘ole ka hō‘onipa‘a i nā kula o kā kākou mau keiki. Ma waena o nā moku‘āina a pau, ‘o Hawai‘i ka mea hope loa no ke kīko‘o ‘ana aku i nā kumu, a me ka ho‘olilo kālā o ke aupuni no ke a‘o ‘ana i nā keiki, i nā alaka‘i o kēia mua iho. No ke aha lā? ‘A‘ole anei he lōina Hawai‘i ke a‘o ‘ana mai a me ke a‘o ‘ana aku? ‘Ae nō ho‘i.

I ka makahiki 1820, noho aupuni ‘o Liholiho Kamehameha II ‘o ia ka mō‘ī. Nānā akula ke ali‘i i nā pilikia o nā po‘e Hawai‘i: i ka nui o ka ma‘i, ka make, ka nele, a me ka loli ‘ana o ka pū‘uo kānaka, a mōakāka no iā ia ka waiwai o ke a‘o ‘ana o kona lāhui i ka palapala. Mea mai

‘o Liholiho: “Na wai ho‘i ka ‘ole o ke akamai, he alanui i ma‘a i ka hele ‘ia e o‘u mau mākuā.” He mea ma‘amau ka ma‘a ‘ana o ke akamai, a noke ‘o ia no ka pa‘a pono o ia alahele no ka holo ‘ana o kona lāhui i mua.

Ua hā‘awi loa aku ia mō‘ī i kālā no ke pa‘i ‘ana i ka 2,500 palapala pī‘apā i unuhi ‘ia ma ka ‘ōlelo Hawai‘i, he 16,000 mau kope o nā puke pela, he 4,000 kope o nā puke baibala pōkole, he 4,000 kope o nā puke kakekimo, a ma ka lā ‘ewalu o ‘Okakopa makahiki 1829 ua pa‘i ‘ia e ke aupuni o Hawai‘i ma kahi o ka 120,000 mau kope o nā puke pela! Ma ka hana a Liholiho, hiki iā kākou ke ‘ike i ka waiwai o ke a‘o ‘ana ma mua o ka waiwai o ke kālā. A i ka noho ali‘i ‘ana o Kauikeaouli Kamehameha III hiki iā ia ke ha‘i aku i kāna ‘ōlelo kaulana me ka ‘oia‘i‘o: “‘O ko‘u aupuni, he aupuni palapala ko‘u,” a ‘oia nō.

Ke ho‘i kākou i nā pilikia o kēia wā, he pilikia kahiko ka ‘imi ‘ana i kālā, he pilikia hou ka hō‘ole ‘ana i ka na‘auao e pono ai nā keiki a me ka hō‘ole ‘ana i ka uku e pono ai nā kumu. Ma ka wā o ko Kauikeaouli ho‘omau ‘ana i ke akamai, aia ma kahi o ka 182,000 kānaka maoli i noho ma nā ‘āpana 1,103 o Hawai‘i nei. I ka makahiki 1831 ua lako ke aupuni o Hawai‘i i nā kula hou he 1,103 a me nā kumu i a‘o aku! A ma‘a ua ala la i ka lāhui holo‘oko‘a. No laila, pehea lā kākou i hō‘ea ai i kēia pilikia nui loa?

Ua mālama pono ke ali‘i Hawai‘i i kona mau waiwai: ka ‘āina a me nā kānaka. Pa‘a ke alahele o ke akamai i ko lākou ho‘okō ‘ana i nā kuleana a lākou. No laila, ‘o wai ke noho ali‘i i kēia lā? He aupuni palapala kona? Hō‘ike ‘ia ka noho pono ‘ana o ke ali‘i ma luna o kona aupuni i ka momona o ka ‘āina a me ka pono o nā kānaka. Ina kala‘ihi ka lani, kūpiliki‘i ka honua. Eia lā, he aupuni pī ho‘i kēia i nānā ‘ole i kona mau kuleana.

He ha‘ina pōpilikia kēia kū‘ē ‘ana o nā po‘e o Hawai‘i no nā mea pono o ke ola piha. Pūhili ke koko ma loko o ka pu‘uwai o nā kumu, nā haumāna, a me nā mākuā i hiki ke ‘ike i ka

waiwai ‘oia‘i‘o o ka ho‘ona‘auao a me ka noke ‘ana me ka uku pono ‘ole. ‘O kā ‘oukou komo ‘ana i ka palule-T ‘ula‘ula ka huliau o ke kuana‘ike o ka mea waiwai. E ‘a‘ahu kākou a pau i ka ‘aha‘ula o ke kuleana a ma‘a i ke ala o ke akamai no nā keiki o kēia ‘āina. A ‘ike paha ka ‘aha‘ōlelo kau kānāwai i ka ‘i‘ini a me ka ‘ula o nā kānaka o Hawai‘i nei.

Ua Mau ke Ea o ke Aupuni na Keawe Goodhue

‘Auhea ‘oe e ka hulu kupuna i lilo i ka hali‘a aloha no kekahi au ma mua loa, e ka makua, e lauele ana i ka lili‘u aloha no ka wahine, e ke kama lei e naue ana ma ka moana kai uli, ‘auhea lā ‘oe e ka Hawai‘i. ‘O ke ea o ka ‘āina o kekahi lāhui, he mea ia e ola ma nā kānāwai o kona aupuni, a na ka palapala ku‘ikahi o ia aupuni e ho‘opa‘a i kona kūlana kū‘oko‘a ma ka honua nei. Eia na‘e, ‘o ke ea o ka ‘āina o Hawai‘i nei, ua ‘oi loa aku. Ola akula ia ma nā kaha one o kō kākou ‘āina kulāiwi, ola ia ma nā kuahiwi kilakila i uhi ‘ia i ka ua kili nahe, ola ho‘i ia ma nā lo‘i kalo a ka mahi ‘ai e mahi ai. Ola ke ea o ka ‘āina o Hawai‘i nei i ke kanaka aloha ‘āina.

Ua mau ke ea o ka ‘āina o Hawai‘i i ke au aupuni Mō‘ī, a ke mau nei nō a i kēia lā nō. I ka makahiki 2001 ua ho‘opi‘i aku kekahi kanaka Hawai‘i ma ka inoa ‘o Lance Paul Larson i ke Aupuni o Hawai‘i no ka māmalu ‘ole ‘ana mai iā ia ma lalo o nā kānāwai o ke Aupuni Hawai‘i, a me ka ‘ae ‘ana ho‘i i nā kānāwai o ke Aupuni o ‘Amelika e ho‘oluhi hewa i kō Hawai‘i mau kānaka aloha ‘āina. Ua holomua kēia ho‘opi‘i a ho‘okolokolo ‘ana aku ma Netherland (Netherlands), ma ka ‘Aha ‘Uao Kūpene (Permanent Court of Arbitration). Ua ‘ike maopopo nā luna kānāwai o ia ‘aha i ke kūlana kū‘oko‘a o ke Aupuni Hawai‘i i ka makahiki 1898, a ua ‘ike maopopo nō ho‘i i ka mau ‘ana aku o ke ea kū‘oko‘a o ke aupuni a i kēia lā nō.

‘O ke kuleana o kēia ‘Aha ‘Uao Kūpene, ‘o ia ho‘i ka ho‘omaluhia ‘ana aku i nā pilikia a me

nā kū‘ē‘ē ma waena o nā aupuni kū‘oko‘a o ka honua nei. He mea nui ka ho‘omaopopo ‘ana mai i ke kūlana ki‘eki‘e o ua ‘aha nei. ‘A‘ole ‘ae ‘ia ke komo ho‘okahi ‘ana o kekahi kanaka a i ‘ole kekahi hui ‘oihana paha ma ia ‘Aha. He pono ke komo pū ‘ana aku o kekahi aupuni kū‘oko‘a. ‘O ‘Amelika paha, ‘Enelani, Palani, a i ‘ole ‘o Kelemānia paha kekahi o nā aupuni i hiki ke komo. I ka makahiki 2001, ua komo nō ke Aupuni o Hawai‘i ma ke ‘ano he aupuni kū‘oko‘a.

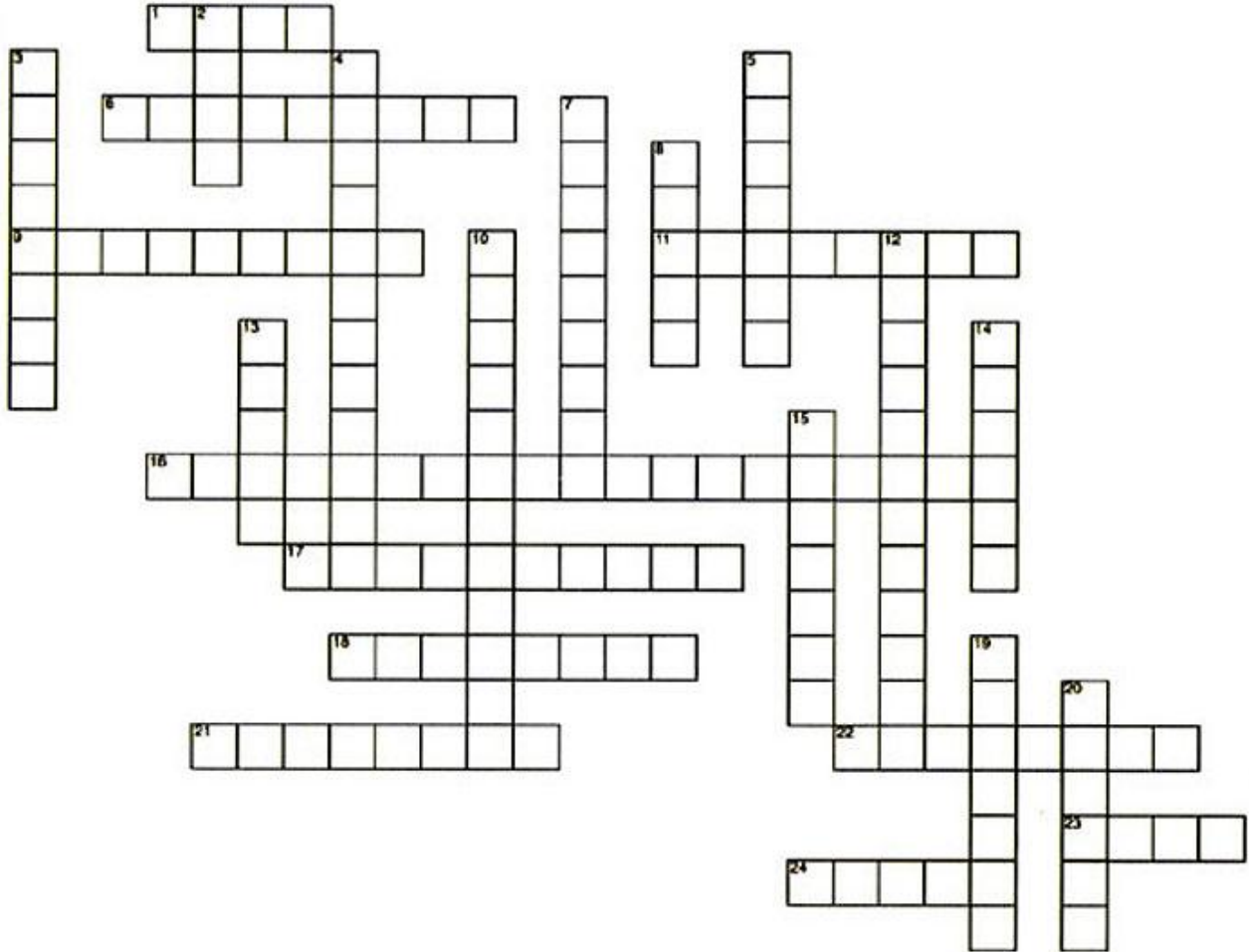
E ho‘i hou ana ke Aupuni o Hawai‘i i ka ‘Aha ‘Uao Kūpene ma Netherland i kēia mua iho me ke kōkua o Kk. Federico Lenzerini no ‘Īkālā. He mea nui ke kōkua ‘ana mai o Kk. Lenzerini i ke aupuni o Hawai‘i no ka mea he kā‘e‘a‘e‘a ‘o ia no ke kānāwai kau‘āina (international law), a he loea ho‘i ‘o ia ma nā kānāwai no nā pono o ka lāhui kanaka (human rights). E ho‘omaopopo mai e ka mea heluhelu, ‘a‘ohe waiwai e loa‘a iā ia nei i ke kāko‘o ‘ana mai. Eia kekahi, e uē ana nā Hawai‘i mai ka wā o ka ho‘okahuli aupuni, a e kū‘ē‘ē ana, kāhea ana, a ui mau ana, eia na‘e, e hā‘ule mau ana ka leo o ka lāhui ma ka pepeiao kuli o nā lāhui mana o ke au nei. Me ia kōkua a Kk. Lenzerini, e lohe ‘ia ana ka leo o ka ‘oia‘i‘o.

Ua wehewehe mai ‘o Kk. Lenzerini, iā ia ma ka ‘aha i mālama ‘ia ma Ke Kula ‘o Kamehameha i kēlā mahina aku nei, i ke aloha pau ‘ole o nā Kānaka Hawai‘i i kō kākou ‘āina kulāiwi nani. A i kona lohe ‘ana mai i nā leo kū‘ē, nā leo kāko‘o, a me nā leo pīhoihoi o nā keiki a me nā kānaka makua, ua ulu mai ke ahi i loko ona e ho‘omau i kona kōkua ‘ana iā kākou, a e noke i kēia kuleana i pili ‘ole kā ho‘i iā ia a me kona ‘āina hānau.

Na ka pōmaika‘i a me ka ‘oia‘i‘o i ho‘ouna mai iā Kk. Lenzerini iā kākou, a na ke kanaka aloha ‘āina e mau i ke ea o ka ‘āina o Hawai‘i. Mai hā‘awi pio, e hilina‘i ma hope o ke aupuni o Hawai‘i nei. Kū pākū ka pali o Nihoa i ka makani.

A HUA A PANE, A PANE MAI

NO KA MO'OLELO O HI'IAKAIKAPOLIOPELE

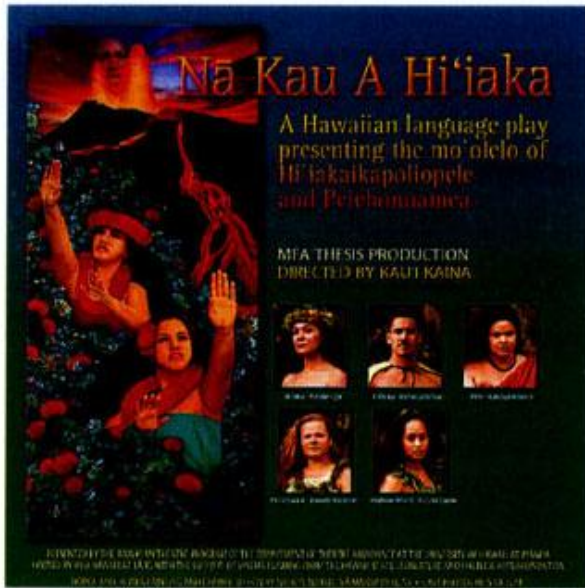


HINA

- 1 Ka mea a Hōpoe i a'ō ai iā Hi'iaka
- 6 Ka hale o Lohi'au ma Kaua'i
- 9 Kekahi mo'ō i make 'ole iā Hi'iaka
- 11 Kc koi 'ana i ka huia 'ana mai o kekahi; penei 'o Lohi'au iā Pele ma Kaua'i
- 16 Ka Hi'iaka nona kc kōnāwai e 'ai i ka i'a mai kc po'ō a ka hi'u
- 17 Ka wa'a o Pele i holo ai mai Kahiki mai
- 18 Ka mo'ō mua loa i make iā Hi'iaka
- 21 Ke kōnāwai a Pele i kau ai ma luna o Lohi'au
- 22 Ka hale o Pele ma Puna
- 23 Kc akua i 'ai 'ōpihi ma nā pōhaku o Puna
- 24 Ka wahine 'ami lewa i ke kai

KŪ

- 2 Ke 'ano o ko Hi'iaka pā'ū ho'okalakupua
- 3 Ka inoa maoli o Hōpoe
- 4 Ke aikāne i pili i ka pā'ū o Hi'iaka ma nā pali o Kaua'i; nāna ka 'ōlelo "'O kū, 'o kā"
- 5 Kahi i pae mua ai 'o Hi'iaka ma O'ahu nei
- 7 Kahi i hui ai 'o Hi'iaka me nā kaikamāhine kui lei hala
- 8 Ka 'ai ho'onu'u a Hi'iaka
- 10 Ka inoa o ko Pele mau maka
- 12 Kekahi o nā mo'ō i kia'i i ka 'uhane o Lohi'au ma Kaua'i
- 13 Ka mōhai a Wahine'ōma'ō
- 14 Kahi i loa'a ai 'o Lohi'auipo iā Pele
- 15 Ke aikāne a Kauakahiapaoa
- 19 Ka lima ku'i i mana ai 'o Hi iaka
- 20 Ka mea nāna i kākau no ko Maui Hi'iaka ma ka nūpepa Kū'oko'a Home Rula



KA PO'E HO'OPUKA NŪPEPA

Leilani Chow
Keawe Goodhue
B. Kauahi

LUNA HO'OPONOPONO
Kahikina de Silva

HOPE LUNA
HO'OPONOPONO
Ha'alilio Williams-Solomon

HELU 15, PUKE 2

UA I Ulu Kanaka i ka
KE FA
Na'auao a Kahiko
Oia Na Iwi a'o Koukepuni

Ho'okū Haku Mele

- 4 Paukū
E haku Paukū a ka Mo'olelo o Mahealani, a ho'ouka i ka haku a Mahealani
a'o'ō mahealani
- He aha ka mo'olelo o E Kī i ka luma o Mahealani o "Ulu Kanaka" a'o
"Na'auao a Kahiko"?
- He hōkū \$125 na he haku puke a Mahealani a'o "Ulu Kanaka"
Mahealani
- E ho'ouka mahealani i ka haku a'o Mahealani i ka haku a'o Mahealani
Mahealani

E haku Mahealani haku Mahealani i ka haku a'o Mahealani, a haku Mahealani
Mahealani i ka haku a'o Mahealani i ka haku a'o Mahealani i ka haku a'o Mahealani
Mahealani

E hōkū a e wāhala aku hōkū i ka haku a'o Mahealani